



## **Worldwide Architecture The next generation**

Publisher	Wolters Kluwer Italia
Brand	UTET Scienze Tecniche
First print run	2010, August
Layout	English / Italian
Format	23 cm x 28,7 cm
Extent	350 pages
Illustrations	600 ca.

### **The book**

*Worldwide Architecture* is a collection of projects that presents an original panorama of architecture at the global level, through a network of relations between professionals. This volume presents the faces, names and projects of architects under 40, one per country, from forty five different countries, each selected and presented by a referee. Each project provides the referee's critical introduction, information on the studio and architect, a detailed description with texts and, mainly, images. The projects – many of which already implemented, some only on the drawing board – make it possible to provide a worldwide comparison of ideas, results and styles of a new generation of architects. The next generation .

### **The Editor**

Luigi Prestinzenza Puglisi is an architectural critic and professor of 'History of Contemporary Architecture' at the University of Rome 'La Sapienza'.

He currently writes for *Domus*, *The Plan*, *L'Arca*, *Abitare*, and *Architectural Design*, and has been appointed Italian foreign correspondent on behalf of *A10* (Holland), *Monument* (Australia) and *The Architect's Newspaper* (USA). He is also one of the editors of *Le Carré Bleu*.

Director of the weekly on-line magazine *presS/Tletter* ([www.presstletter.com](http://www.presstletter.com)) and Editor in chief of numerous exhibitions and events, including the Italian Pavilion at the 'Brazil Biennale', he is a member of the executive committee of *InArch* (Istituto Italiano di Architettura).

Among his books: *New Directions in Architecture* (Wiley, March 2008), *Rem Koolhaas* (1997), *HyperArchitecture* (1998).

If you want to buy the book click on:

[http://shop.wki.it/utet\\_sienze\\_tecniche/Libri/worldwide\\_Architecture\\_s21710.aspx](http://shop.wki.it/utet_sienze_tecniche/Libri/worldwide_Architecture_s21710.aspx)

### **The Event**

The 27th of August 2010, in Venice, presS/Tfactory\_Associazione Italiana di Architettura e Critica presents: **ARCHITECTS MEET IN FUORI BIENNALE** the first worldwide under 35 architects survey.

During the vernissage days of the Venice Biennale – a relevant event, though with no novelty anymore- presS/Tfactory\_AIAC will launch an alternative proposal that opens to the horizon of the young architects in the world. Looking for the new promises that might emerge in the next future.

The event will take place into two different moments, by invitation only:

#### **AFTERNOON**

AULA MAGNA IUAV, FACULTY OF ARCHITECTURE.

The first one will take place in the afternoon in the Aula Magna of the IUAV, Faculty of Architecture. There we will present the work of the young Italian architects and young Italian critics who took part this year to the competitions for under 35. The competitions were held by presS/Tfactory\_AIAC and Professione Architetto, and got published on [www.prestletter.com](http://www.prestletter.com). A first round jury selected 10 finalist, then a second international jury has elected three winners for each competitor. The winners will be awarded the same afternoon.

#### **NIGHT**

PALAZZO WIDMANN.

The second part of the event will be at night, at Palazzo Widmann. There will be the launch of the book *Worldwide Architecture*, published by UTET. More than 40 different young critics or designers of different nationality have been asked to single out one under 35 team and one design of theirs from their Nation. The young architects reported in the book will meet here in a big party from all over the world and present their work to journalists and international critics.

#### **ATTENDING THE EVENT:**

**Odile Decq** (architect), **Joseph Grima** (Storefront director), **Juan Herreros** (architect), **Hans Ibelings** (A10 director), **Luigi Prestinenza Puglisi** (Compasses director), **Amedeo Schiattarella** (President of the Ordine degli Architetti Pianificatori Paesaggisti e Conservatori di Roma e Provincia), **Robert Thiemann** (Mark director), **Giancarlo Carnevale** (Dean of the Faculty of Architecture Iuav), **Anna Baldini** (PresS/Tmagazine), **Cesare Maria Casati** (L'Arca), **Luca Gibello** (Il Giornale dell'Architettura), **Nicola Leonardi** (The Plan), **Carlo Mancosu** (L'Architetto italiano), **Giuseppe Nannerini** (L'Industria delle Costruzioni), **Paola Pierotti** (Edilizia e territorio), **Francesco Orofino** (Inarch), **Helen Castle** (AD director), **William Menking** (Editor in chief).

# Casa passiva con rivestimento tessile

## Passive house with textile skin



**BLAF architecten**  
BELGIO (BELGIUM)

Poststraat 100, Lokeren

info@blaf.be  
www.blaf.be



nome edificio:  
building name Casa passiva con rivestimento tessile  
/ Passive house with textile skin

indirizzo:  
address Witteramsdal 14

città:  
city Asse

paese:  
country Belgio / Belgium

progettista:  
designer BLAF architecten

periodo di realizzazione:  
years 2008-2009

premi architettonici:  
architectural awards Belgian Architecture & Energy Award

tipologia intervento:  
type of project nuova costruzione / new construction

destinazione:  
use category residenziale / residential

dimensioni:  
dimensions 249 m<sup>2</sup>



Due note caratteristiche distinte della popolazione belga sono l'elevata ricercatezza della qualità della vita e la tutela dei valori privati. Nella seconda metà del Novecento il territorio – già storicamente molto antropizzato – si è sviluppato in una quasi ininterrotta soluzione urbana di lottizzazioni di case unifamiliari. Le città si sono diluite a discapito degli aspetti collettivi erodendo il territorio fino a renderlo una delle regioni più dense e disperse d'Europa. Da tempo il dibattito architettonico e urbanistico ha rilevato la situazione, ma la scollatura tra la realtà e la discussione stenta a trovare punti di congiungimento. Conseguentemente trasformazione e adattamento dell'esistente e nuova costruzione negli interstizi rimasti sono le sfide della nuova generazione. L'edificio di BLAF architecten si pone come sobrio e obbiettivo paradigma su come affrontare il problema rivedendolo dall'interno e riformulando in maniera attuale e consapevole le stesse dinamiche che lo hanno creato.

Bernardina Borra

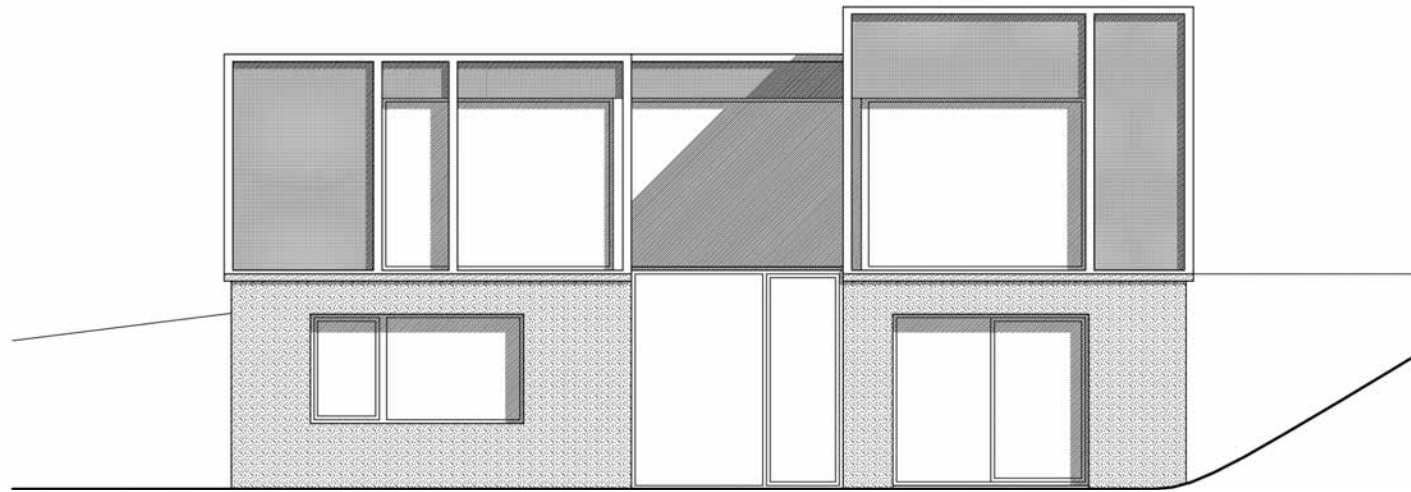
*Two well-known characteristics of the Belgian people are their high quality of life and sense of privacy. In the second half of the twentieth century, much of Belgium – already altered by human activity throughout history – became an almost uninterrupted expanse of single-family homes. Cities were diluted to the detriment of their collective qualities, while land was consumed to the point that this small nation became one of the most densely populated yet dispersive regions in Europe. The situation has long been discussed by architects and planners, yet the disconnect between reality and discussion has made it difficult to reach agreement. Transforming and adapting existing structures and infilling remaining spaces has thus become the challenges of the new generation. The passive house by BLAF architecten is a restrained example of how to approach the problem from within, reformulating, in a modern, informed manner, the same dynamics that first created the problem.*

■ BLAF è un team di giovani architetti con esperienze complementari nei campi dell'architettura, dell'edilizia e della progettazione urbana. Dopo dieci anni di attività essi sono arrivati alla conclusione che l'architettura non rappresenta semplicemente la risposta a una domanda ma è essa stessa generatrice di nuovi interrogativi e relazioni, poiché è in grado di rompere i legami con le proprie origini per crescere e svilupparsi, generando attività e creando nuove ambizioni. La loro ricerca è centrata su questa capacità generatrice dell'architettura. La durabilità è il denominatore comune che mette in relazione gli aspetti urbanistici, architettonici e tecnici di ciascun progetto: la necessità di affrontare simultaneamente tutti questi aspetti sottolinea l'importanza del lavoro in team ed è un forte stimolo verso l'innovazione.

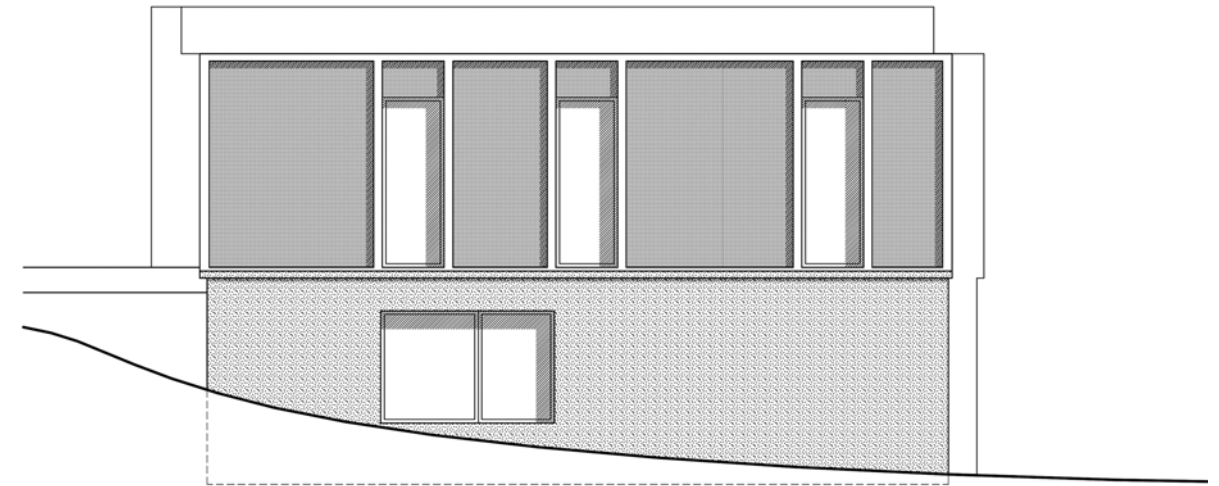
*BLAF is a team of young architects, each of whom has complementary interests and expertise in architectural design, construction and urban design. After ten years of practice they have come to the conclusion that architecture not only represents an answer to a question, but also generates new questions and confrontations. In this way architecture is able to break away from its own genesis, to grow and develop, to generate human activity and to create new ambitions. Their research focuses on this generating capacity of architecture. Durability is the common denominator connecting the urban, architectural and technical aspects of a design. The need to treat these aspects simultaneously stimulates the innovative character of our research and underlines the importance of teamwork.*

■ Questa casa ad asse è sita nella periferia di Bruxelles. Il lotto è stato scelto in funzione della logistica familiare. L'impianto infrange ogni consuetudine della quieta lottizzazione anni Sessanta in cui si inserisce: la casa arretra dalla strada, e anziché nascondersi dai vicini dietro un'alta siepe li invita in una corte da giochi aperta durante il giorno. La struttura di sotto ospita l'ingresso, una stanza da letto e degli spazi di servizio entro un muro massiccio foderato di EPDM, mentre la parte di sopra è in pannelli strutturali di legno. La distribuzione interna sfrutta il pendio e le ottime qualità della casa passiva spostando tutti gli spazi soggiorno al piano superiore in un ampio spazio aperto e continuo connesso al giardino retrostante. L'intero progetto è un'interpretazione esponenziale di come la sostenibilità possa essere applicata in maniera integrale e coerente nel quotidiano. È così semplicemente logico ed efficiente da sembrare quasi naturale, quando invece ha riversato i presupposti.

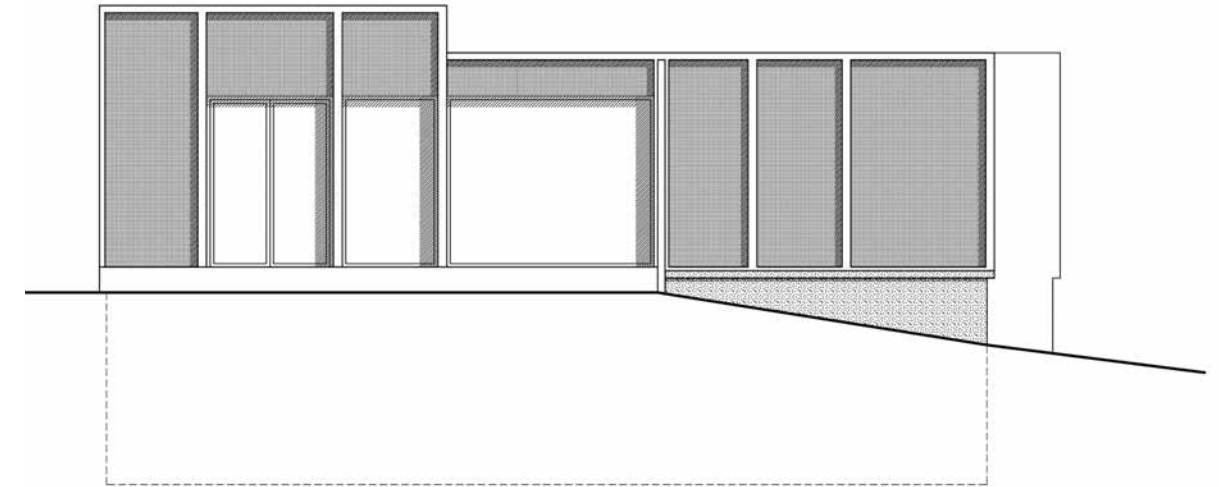
*The lot for this single-family home in Asse, on the edge of Brussels, was chosen to enable family members to shorten their daily commute. The house violates all the usual conventions of its quiet, 1960s neighborhood. It is stepped back from the street, and rather than hiding from its neighbors behind a tall hedge, it invites them into a playground that stays open in the daytime. The lower portion of the building contains the entry, a bedroom and service spaces behind a massive wall faced with EPDM, while the upper portion is clad with structural wood panels. The interior layout takes advantage of the slope and the excellent passive characteristics of the structure by locating all of the living areas upstairs, in a large, open space that looks directly onto the rear garden. The project is wonderful demonstration of how sustainability can have a coherent role in our everyday lives, so logical and efficient that it seems perfectly natural, rather than a reversal of the usual assumptions.*



Prospetto frontale  
Front elevation



Prospetto laterale  
Side elevation



Prospetto retro  
Rear elevation





Planimetria sito  
Site plan



Sezione verticale,  
dettaglio  
Vertical section,  
detail

0 0.5M  
VERTIKALE DOORSNED  
DOOR MUREN

